

- GENERAL NOTES:
- EMERGENCY VENT SIZING BASED ON UL142 TABLE 8.1.
 - PORTS PER UL 142 SECTION 10
 - NORMAL VENTING PER UL 142 SECTION 8.11, TABLE 8.2
 - WELDS AND JOINTS PER UL SECTION 6 FIGURE 6.1, 6.2
 - STEPS AND PLATFORMS PER OSHA 1910.24

GENERATOR DATA:

MODEL: 1500 D0G4B
 DIMS INCHES: 234.5L X 78.7W X 111.8T
 WET WEIGHT Lbs: 25,330
 FUEL CONSUMPTION
 GPH @ 100% LOAD: 109.4
 COMBUSTION AND
 COOLING CFM: 65,045
 GEN DRAWING: 0500_4357

GENERAL DESCRIPTION:

SUB BASE FUEL SUPPLY TANK
 UL 2085 LISTED DOUBLE WALLED
 EMERGENCY VENTS
 NORMAL VENT
 LOW LEVEL AND LEAK DETECTION FLOAT SWITCHES
 LOCKABLE FILL WITH 95% OVERFILL PREVENTION
 VALVE & 7 GALLON SPILL CONTAINMENT
 MECHANICAL LEVEL GAUGE
 TEACHABLE 4-20MA FUEL LEVEL SENDING UNIT

GUARANTEED SOUND PERFORMANCE ENCLOSURE
 GUARANTEED SOUND 68dB(A) @ 60 FEET
 14GA GALVANEAL CONSTRUCTION
 INTAKE AND EXHAUST SOUND CONTROL SECTIONS
 SOUND DIRECTIONAL FLENUM

ELECTRICAL

120/240/208 100A 1Ø MAIN BREAKER DIST. PANEL
 WIRED TO LIGHTS, GFCI, CHARGER, BLK
 HEATER, UNIT HEATER
 3Ø 30 kVA TRANSFORMER WITH FUSED PRIMARY
 DISCONNECT WIRED TO DIST. PANEL
 SUPPLY AND INSTALL SENS BATTERY CHARGER
 3-LIGHT ALARM PANEL

ACCESSORIES

12" STRUCTURAL STEEL SUBFRAME
 SPRING ISOLATORS
 INTERIOR MOUNTED SILENCER
 STEPS AND PLATFORMS
 ONE EACH SIDE FOR ACCESS TO ALL DOORS

TANK DATA:

CAPACITY GALLONS: 5300
 GALLONS PER IN OF DEPTH: 206.8
 RUN TIME @ FULL LOAD Hrs: 48.4
 TANK WEIGHT DRY Lbs: 25,389
 TANK WEIGHT WET Lbs: 63,915
 CONDUIT STUB AREA: TYPE C (SIDE)
 STATE SPEC. TX

ESTIMATED WEIGHTS: (lbs)

ENCLOSURE WEIGHT: 23,820
 TOTAL SHIPPING WEIGHT: 49,150
 (NOT INCLUDING TANK)
 TOTAL SYSTEM WET WEIGHT: 110,566

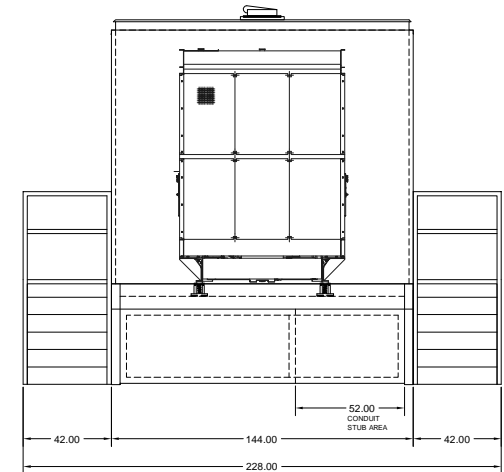
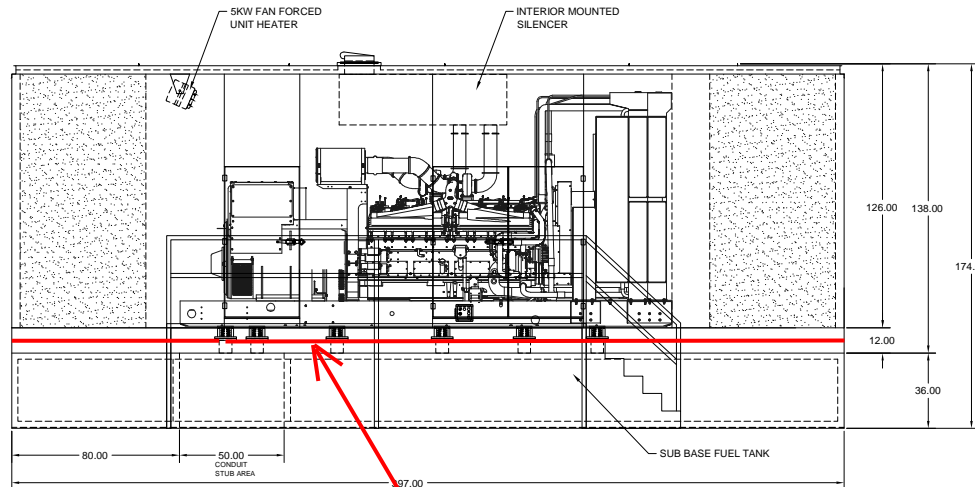
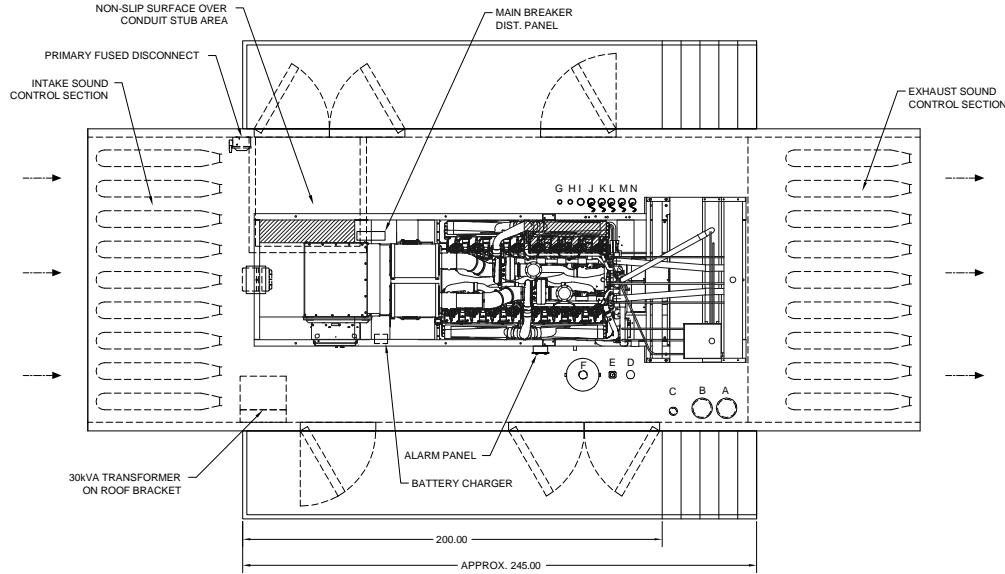
TANK PORTS:**

A = 8" EMERGENCY TANK VENT
 B = 8" EMERGENCY BASIN VENT
 C = 2" NORMAL TANK VENT
 D = 2" TANK SPARE PORT (FNPT)
 E = MECHANICAL FUEL LEVEL GAUGE
 F = 2" FILL WITH 95% OVERFILL PREVENTION
 VALVE & 7 GALLON SPILL CONTAINMENT
 G = ENGINE SUPPLY
 H = ENGINE RETURN
 I = 2" TANK SPARE PORT (FNPT)
 J = LOW LEVEL FLOAT SWITCH
 K = LEAK FLOAT SWITCH
 L = HIGH LEVEL FLOAT SWITCH
 M = CRITICAL HIGH LEVEL FLOAT SWITCH
 N = PORT FOR FUEL MONITORING

** TANK PORTS MAY VARY IN LOCATION DUE TO INNER
 CONSTRUCTION OF SUB BASE TANK, AND LOCATION OF
 EQUIPMENT. DEPICTION SHOWN IS A GENERALIZED
 LOCATION.

REVISIONS:

EDITION	DESCRIPTION	DATE
0	ORIGINAL CONCEPTUAL RELEASE	06/04/12
1	ADDED STEPS/PLATFORM	06/07/12
2	ADD HEATER AND PORT	06/08/12



Full Non Slip Surface
 per Dale - 7-11-2012
 per Keith



THIS DOCUMENT IS CREATED BY AND IS THE PROPERTY OF FREEMAN ENCLOSURE SYSTEMS LLC. ITS USE IS AUTHORIZED ONLY FOR RESPONDING TO A REQUEST FOR QUOTATION OR FOR THE PERFORMANCE OF WORK FOR FREEMAN ENCLOSURE SYSTEMS LLC. THIS DRAWING IS NOT INTENDED TO BE USED FOR CONSTRUCTION OR DISTRIBUTION WITHOUT CONSENT. ALL DIMENSIONS ARE IN INCHES UNLESS SPECIFIED.

Designed by CFS	Checked by DF	Filename SUBMITTAL	Date 06/04/12	Reference 6387	Edition 2
PHILLIPS 66					
Drawing Number S3810554-2	Scale N.T.S.	Sheet 1/1			